

**LAKE BORGNE BASIN LEVEE DISTRICT
MONTHLY STATUS REPORT
October 2009**

Levees

- Maintenance Crews:
 - Fine-graded the berms and removed standing water on the floodside (Batture) of the MRL in recessed areas
 - Cut Mississippi River Levee from Caernarvon to Arabi.
 - Cut non-federal levee from Arabi to Verret.

- LBBLD has completed the 3rd Quarter 2009 levee inspections on the HPL (Federal and Non-Federal) and MRL.

- The Corps of Engineers is scheduled to perform the Annual Mississippi River Levee Inspection (MRLI) on October 21, 2009.

- The (5) five-year periodic inspection on the Bayou Dupre Control Structure was completed by the Corps of Engineers on September 28, 2009. During our debriefing minor items were addressed. The Control Structure operated as tasked. Our overall inspection was a success, and the final report will be delivered at the end of the 4th Quarter 2009.

- LPV 144- Bayou Dupre Control Structure- 95% P&S out for review and comments. COE would like to award before end of year 2009. ROE awaiting DOTD 100% plan review.

- LPV 145- Levee from Bayou Bienvenue to Bayou Dupre- 50% P&S completed & out for review. ECI contractor chosen. Pile load tests are 50% complete. ROE issued.

- LPV 146- Levee from Bayou Dupre Control Structure to LA 46- ECI contractor chosen. Pile Load/Soil Testing 95% complete. ROE issued. 50% P&S are scheduled to be submitted on October 23, 2009.

- LPV 147- Gate Structure at LA 46 and Bayou Road- 65% P&S completed & out for review. Access Road settlement rates still under advisement. A meeting is scheduled with local authorities and Corps on Friday, October 2, 2009 at 2 pm to discuss egress during and after construction for the fire department and local traffic. ROE: Awaiting DOTD 100% Design review.

- LPV 148.02- Levee from Bayou Road to Caernarvon- ECI Contract awarded to Odebrecht-Baker late last week. Surveys completed. Continuing design. ROE issued.
- LPV 149- Caernarvon Flood Wall- 65% P&S completed & comments submitted. Sector Gate vs. Stop Log Gate decision is still pending. Drainage Study final report is being issued October 2, 2009. ROE for Construction: Awaiting DOTD 100% Design review. ROE for Pile Load Test issued in LBBLD's jurisdiction. Plaquemines Parish signed an ordinance, but the AFE for portion in Plaquemines has not been issued to-date.

Pump Stations

- LDOTD has completed the final plans and specifications for State Project No. 579-44-0001 (Phase 6) Transition Improvements & Scour Protection at Pump Stations #3 (Bayou Villere), #4 (Meraux), #7 (Bayou Ducros) and West of Paris Rd. Transition. Advertisement for bids is out and scheduled to bid late October.
- Rebuild Project for Pump Stations 2, 3 and 5: Contractor- M.R. Pittman
 - Punch list items remaining on Pump Station #5- To be addressed within the next several weeks. Final walk thru to be scheduled upon completion.
- State Project No. 579-44-0001, Trash Screen Repairs at Pump Stations 2, 3 and 5 (Phase 5): The contractor has begun screen fabrication and is scheduled to start installation mid-October.
- State Project No. 579-44-0001, Tainter Gate Repairs at P.S. Nos. 1 & 4 (Phase 3): Contractor completed gate installation and a final walk thru will be scheduled for closeout pending a meeting to discuss concerns on gate closures.
- Staff Gages are being replaced at Pump Stations #2, #3, #4 and #5 on the intake side of each station.
- Safe Room Update- Digital Engineering has completed the final report and mailed a draft to LBBLD. LBBLD has not yet received the draft.
- LBBLD has completed the 3rd Quarter 2009 Pump Station Inspections.

Canals

- Maintenance Crews:
 - Cut and cleaned Artillery Canal on both sides of Andrew Jackson School and houses to accommodate the contractor mobilization.
 - Cut along all canal ROW's.
 - Sprayed both sides of all canal banks.

Miscellaneous

- LBBLD held an equipment auction on September 23, 2009. All items were sold and picked up as of September 30, 2009.

**Lake Borgne Basin Levee District
Status Report on Chalmette Loop Levee System
October 2009**

Lake Borgne Basin Levee District

LPV 148.01 – Verret to Caernarvon Levee Enlargement (Authorized Design Height)

Description: This work includes raising about 8 miles of earthen levee back up to pre-Katrina authorized elevation. Existing elevations are 2 to 3 feet below authorized heights.

Status: Odebrecht Construction Company is currently working this project. Approximately 99% complete. Construction was scheduled for completion in May 2009. Completion date adjusted for required weather days. The final inspection is tentatively scheduled for October 09.

1. Construction:

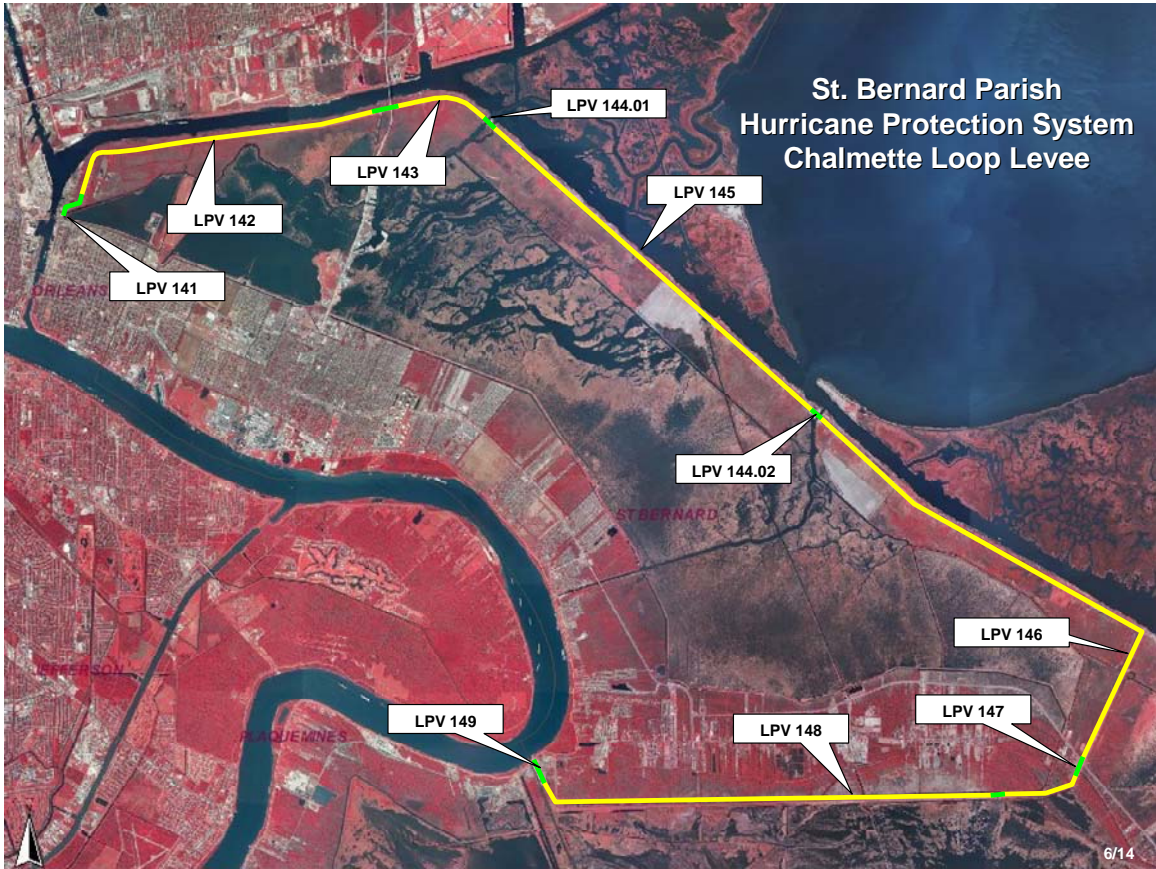
| | | |
|-------------------------------|--|---------------------------------------|
| <u>Project:</u> LPV 148.01 | <u>Estimated Costs</u> \$42,000,000 | <u>Contract Award</u> January 2008 |
|-------------------------------|--|---------------------------------------|

2. Inspection Summary:

Issues: None at this time.

Comments:

LPVHPP Projects



Site Map

Lake Borgne Basin Levee District

LPV 144 - Bayou Dupre Flood Control Structure Replacement (100-yr Design Height)

Description: This structure will be reconstructed as a new structure to meet the 100-year design criteria.

Status: Project entails replacement of the Bayou Dupre flood gate. Plans and Specifications (P&S) are underway to replace the structure. Constructability issues have caused the location of the new structure to shift from the existing location to a flood-side shift. There is a 95% design review meeting scheduled for 1 Oct 09. P&S costs total \$4,679,625.

1. Construction: Has not yet begun.

Project:
LPV 144

Estimated Costs
\$80,000,000

Contract Award
Fall 2009

2. Inspection Summary

Issues: None at this time

Comments: It is expected that this will be funded solely by the USACE.

Lake Borgne Basin Levee District

LPV 145 - Levee Enlargement from Bayou Bienvenue to Bayou Dupre (100-yr Design Height)

Description: LPV 145 Bayou Bienvenue to Bayou Dupre Reach. This work includes raising this approx. 6 mile reach of levee to meet the 100-year elevation requirements. It will probably require additional ROW.

Status: The recommended proposed action for this reach is a T-wall. An Early Contractor Involvement (ECI) contract has been awarded in the amount of \$735,000. The contract includes two additional options for a validation phase and a construction phase totaling \$357,245,988. The Corps is currently working with the design team and the ECI contractor to develop the most effective means to access the LPV 145 reach. The 50% designs are currently being reviewed, and there is a design review meeting scheduled for 8 Oct 09. The construction of this reach is scheduled to start in early December 2009. P&S costs total \$9,634,555,000.

1. Construction:

Project:
LPV 145

Estimated Costs
currently under development

Contract Award
July 2009

2. Inspection Summary:

Issues: Funding

Comments:

Lake Borgne Basin Levee District

LPV 146 - Levee Enlargement from Bayou Dupre to Hwy 46 near Verret (100-yr Design Height)

Description: Bayou Dupre to Verret Reach. This work includes raising this approx. 9 mile reach of levee to meet the 100-year elevation requirements. It will probably require additional ROW.

Status: A T-wall is the recommended alternative for this reach. An Early Contractor Involvement (ECI) contract has been awarded in the amount of \$539,732. The contract includes two additional options for a validation phase and a construction phase totaling \$281,024,618. The 50% designs are scheduled to be submitted on 23 Oct 09. P&S costs total \$9,634,555,000.

1. Construction:

| | | |
|----------------------------|---|--------------------------------------|
| <u>Project:</u> LPV 146 | <u>Estimated Costs</u> currently under development | <u>Contract Award</u> August 2009 |
|----------------------------|---|--------------------------------------|

2. Inspection Summary:

Issues: Funding

Comments:

Lake Borgne Basin Levee District

LPV 147 – Hwy 46 and Bayou Road Floodgate (100-yr Design Height)

Description: Floodwall and Floodgates at Bayou Rd.

Status: A recent analysis of this reach indicates that the construction of a flood gate system at the Hwy 46 crossing will cost approximately \$30 Million less than the previously recommended T-wall/bridge alternative. As such, the new alternative for this reach will be the construction of a flood gate system. The 100% design submittal is scheduled to be delivered on 2 November 09. The 65% designs are complete and are currently being reviewed. The estimated P&S costs total \$2,362,860.

1. Construction:

Project:
LPV 147

Estimated Costs
currently under development

Contract Award
4Q 2009

2. Inspection Summary:

Issues:

Comments:

Lake Borgne Basin Levee District

LPV 148.02 - Levee Enlargement from Verret to Caernarvon (100-yr Design Height)

Description: Verret to Caernarvon Reach. This work includes raising this approx. 8 mile reach of levee to meet the 100 year elevation requirements. It will probably require additional ROW.

Status: The recommended proposed action for this reach is a T-wall. An Early Contractor Involvement (ECI) contract has been awarded in the amount of \$904,675.98. The contract includes two additional options for a validation phase and a construction phase totaling \$277,900,700. The 50% design submittal is scheduled to be delivered on 13 Nov 09. The design teams are working together to develop a strategy for advancing the schedule for this reach. P&S costs total \$9,634,555,000.

1. Construction:

| <u>Project:</u> | <u>Estimated Costs</u> | <u>Contract Award</u> |
|-----------------|-----------------------------|-----------------------|
| LPV 148.02 | currently under development | 4Q 2009 |

2. Inspection Summary:

Issues: Funding

Comments:

Lake Borgne Basin Levee District

LPV 149 - Caernarvon Flood Wall Raise (100-yr Design Height)

Description: Caernarvon Floodwall. This work includes raising the floodwall and floodgates to the 100-year elevation requirement. Additional ROW and possible realignment may be required.

Status: The recommended alternative for this reach consists of re-aligning the protection system to the west of the existing alignment. This will require the construction of a flood gate across the Caernarvon Canal. The 65% design submittal was submitted on 10 September 09. The current design includes a sector gate crossing Caernarvon Canal. However, the discussion to switch to a stop-log type structure has resurfaced. The design team is preparing to develop signs for the stop-log type structure to minimize schedule impacts if the decision is made to switch to this type of structure. The estimated P&S costs total \$3,479,149.

1. Construction:

Project:
LPV 149

Estimated Costs
currently under development

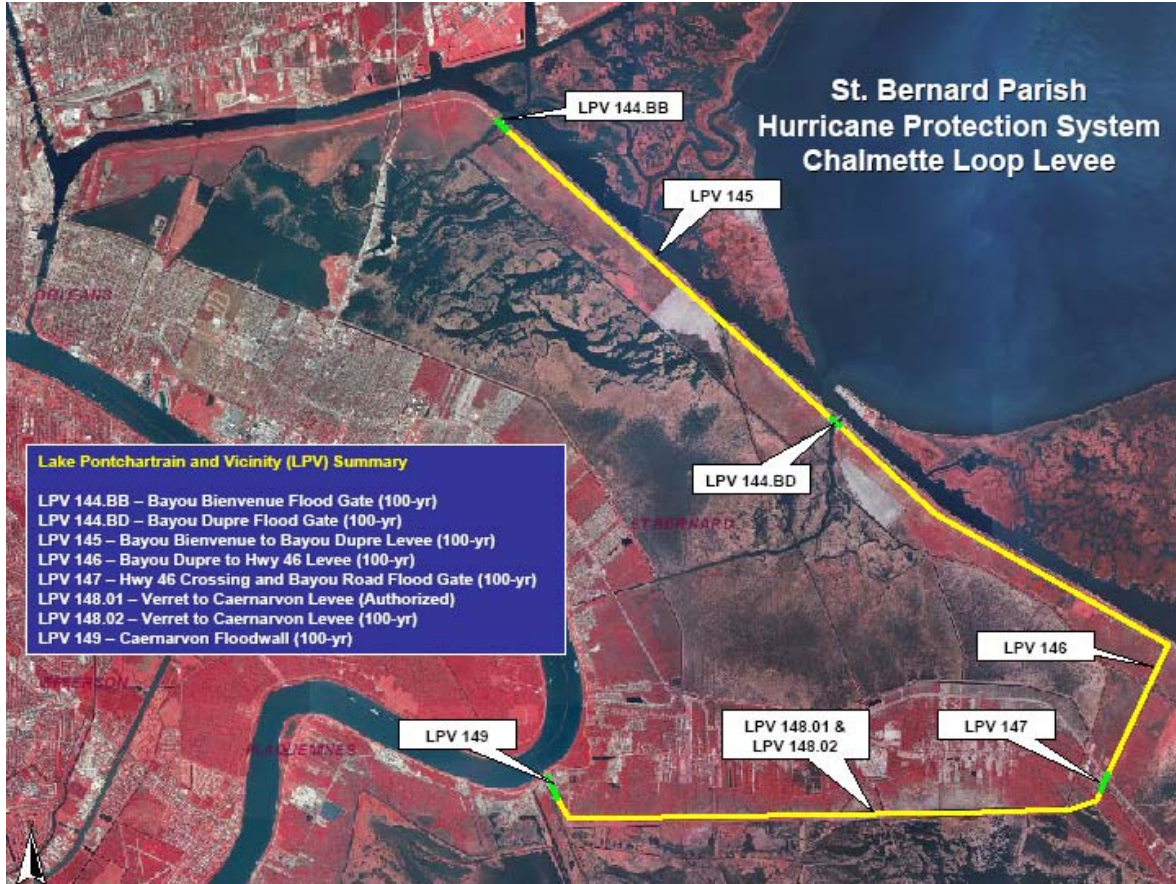
Contract Award
4Q 2009

2. Inspection Summary:

Issues: Funding

Comments:

LPVHPP 100 Year Level of Protection



Site Map

Lake Borgne Basin Levee District

DSR 087-05-054K Bluebird Ditch (NRCS)/ DSR 087-05-058K Artillery Ditch (NRCS)

Description: This work includes the removal of silt and debris from the Bluebird Ditch.

- Status: (2nd Letting) – A pre-construction meeting was held on September 29, 2009 with NRCS, DOTD, Regency Construction and LBBLD. The contractor will begin construction after the survey is completed next week.

1. Construction:

| <u>Project:</u> | <u>Estimated Costs</u> | <u>Contract Award</u> |
|-----------------|------------------------|-----------------------|
| DSR 087-05-054K | \$103,699.00 | September 2009 |
| DSR 087-05-058K | | |

2. Inspection Summary:

Issues:

Comments: Both Projects were combined into (1) one bid package.